

SPECIFICATIONS FOR DURAPAK CONTINUOUS RUBBER MATS

While Durapak Continuous Rubber mats can be supplied in widths from 3 metres wide up to 70 metres long, the most common sizes available are as follows: -

180cm wide x 20mm thickness x 48m long

180cm wide x 17mm thickness x 28m long

100cm wide x 15mm thickness x 30m long

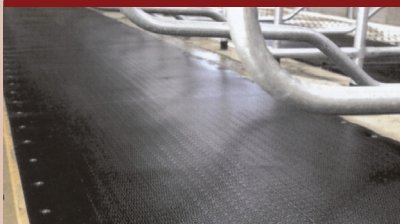
Available with or without nylon inlay. Inlay reduces expansion where there is heavy traffic and animals and adds to the tear resistance.



Milking Parlour



Holding Area



Cubicles

Durapak Agri Portfolio

- Megawrap®
- Durapak Hi Tac®
- Baler Netwrap
- Duranets
- Tickitape
- Patches
- Silage Covers
- Silo Bags
- Silo Nets
- Biocell Lac
- Biocell Farm Mix
- Durasile Grass Silage Additive
- Elephant Baler Twine
- Magnapak Protected Fat
- Cubicle Mats
- Continuous Rubber
- Slatted Rubber Mats
- Calf Slats
- Silclear Dairy Tubing

Your Durapak Agri Approved Supplier is:



FOR FURTHER INFORMATION, PLEASE CONTACT:

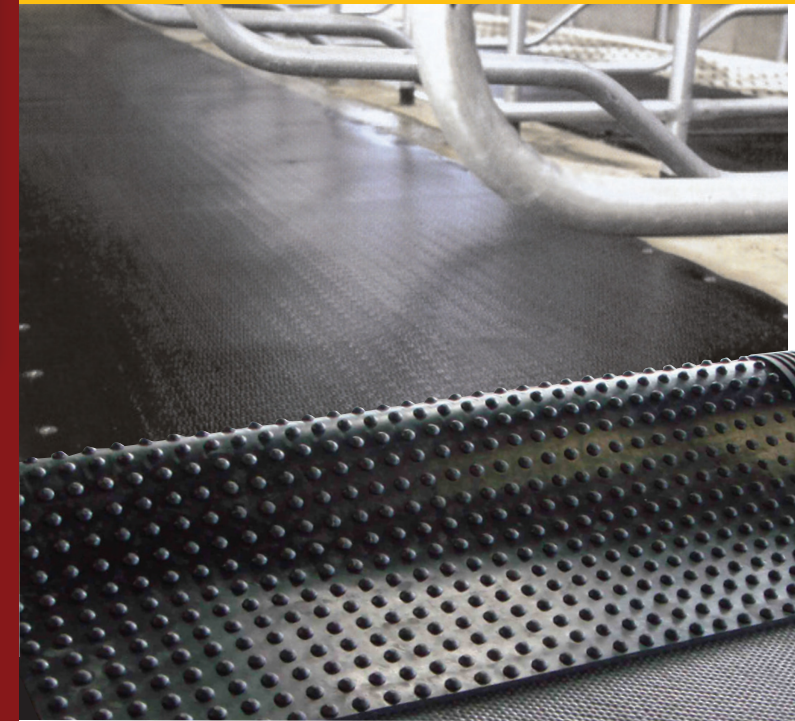
T: (021) 487 5511 F: (021) 487 5515

From N. Ireland & UK: 0800 085 3277

E: info@durapakagri.ie W: www.durapakagri.ie

Durapak

Continuous Rubber



For Greater
Comfort & Improved
Profitability



WHY CONTINUOUS RUBBER?

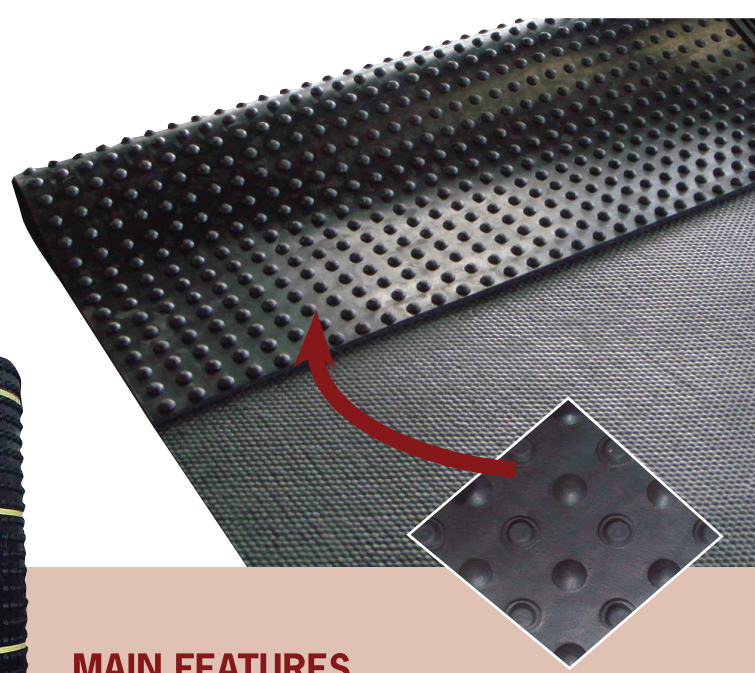
Durapak Continuous Rubber is manufactured from high quality rubber raw materials for a wide range of uses including those in agriculture (cubicles, holding areas, central passageways, milk parlours etc.) also industrial, sport/recreation and household uses.

Durapak Continuous Rubber which can be made in widths of up to 3 metres wide by 70 metres long is a soft, warm and strong premium rubber product.

For animals it will reduce knee and hock damage as well as stress levels on the animal while they are standing, walking or lying down. As well as for use in cubicles, Durapak Continuous Rubber is ideal for rough or slippery surfaces in central passageways, holding areas or in milking parlours as it allows animals to stand or walk confidently and comfortably.



Cubicle Matting



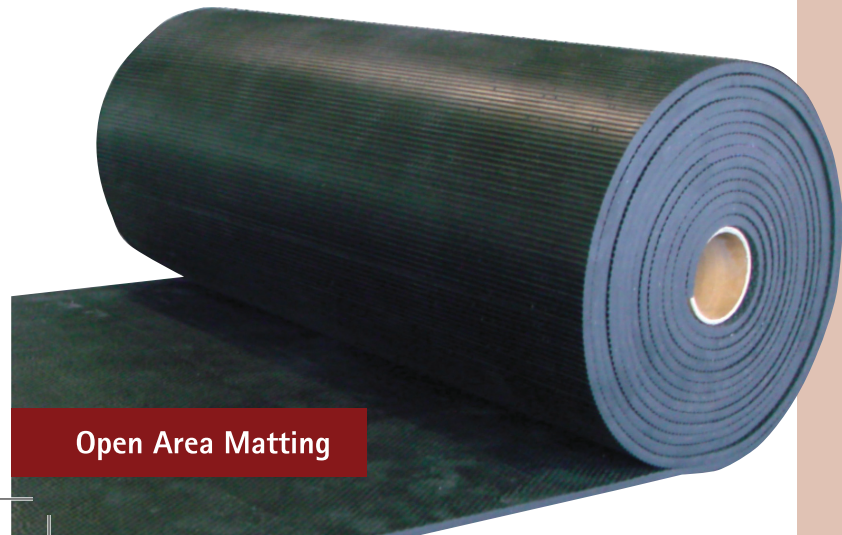
MAIN FEATURES

- Continuous Rubber
- Hammer Top / Farmstud
- Non Absorbent
- Range of widths and lengths
- Non Slip
- Nylon inlay for extra strength

MAIN BENEFITS

The reasons given by farmers for purchasing continuous rubber are;

- No gaps
- Better hygiene because the rubber minimizes the seepage of milk, urine and faeces under the mat
- More secure installation as opposed to individual mats which can slip out of cubicles if incorrectly installed
- Reduced knee and hock damage
- Less lameness
- Less stress
- Easier to clean and maintain



Open Area Matting

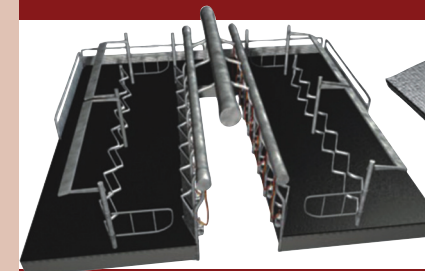
DURAPAK CONTINUOUS RUBBER CAN BE USED IN MANY DIFFERENT WAYS



Rotary Platforms



Cubicles



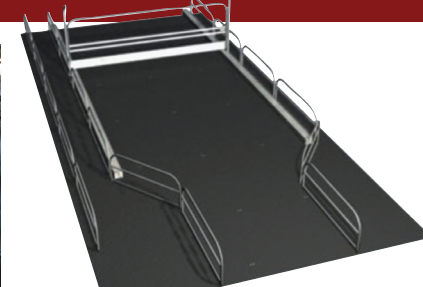
Herringbone Parlours



Scraper



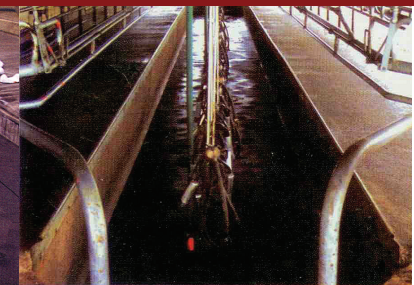
Rotary Parlours



Holding Area



Central Passageways



Pit Mat